

# Isca Academy Curriculum Map: GEOGRAPHY

## Subject sentence – What do we do?

From the GA Manifesto for Geography (2009) ‘Geography underpins a lifelong ‘conversation’ about the Earth as the home of humankind.’ Geography enables students to understand the complex and interconnected nature of the physical and human world we live in and to become informed citizens. We aim to inspire students with a curiosity about the world that will remain with them for the rest of their life.

## How does geography equip students with powerful knowledge?

The discipline of geography includes the fundamental principles of how the world works, both in a physical sense and for the human society that it sustains. This knowledge is essential to being an educated citizen and is transformative in enriching students' understanding and provides a framework for future knowledge. Students can live, work and succeed all over the world. We are also mindful of the backgrounds of our students and consider how influential world events have influenced our world, for example the Berlin Conference in 1884 and how that has affected the development of African countries.

## What skills and cultural capital do students gain in geography?

The curriculum exposes students to differing cultures, busts misconceptions and invites students to think about real world problems, from the impacts of climate change to the involvement of new world superpowers in the development of lower income countries. We also study a variety of theorists and how their achievements have influenced our geographical thinking in a variety of fields e.g. Hess, Wegener, Boserup and Malthus.

## What are the important threshold concepts in geography?

We strongly believe that some concepts should not be encountered for the first time in KS4 and must therefore be assessed rigorously at KS3. This includes, high and low pressure so that students can understand the global atmospheric model and the processes of erosion. An understanding of countries at contrasting levels of development is essential, along with the common disciplinary acronyms: LIC, NIC, HIC.

## How is the geography curriculum designed?

We are unapologetic about the spiral nature of our geography curriculum. Students learn the key concepts and processes identified in the national curriculum and then engage with them at a deeper level of understanding at KS4. To ensure the breadth and depth of our curriculum, we study the geographical ideas in relation to a greater range of place-specific examples at KS3 and do not repeat these examples at KS4. We deliver a combination of human and physical geography topics and update lessons annually to reflect significant world events e.g. the Suez Canal blockage affecting world trade.

## How do you use spaced practice / retrieval practice?

Retrieval practice is a feature of every lesson through the use of Do Now activities to secure the retention of core knowledge. Questions are often selected from the knowledge organiser to strengthen the connection between homework and the geography lessons. Teachers use the data to inform the Do Now questions and re-teaching for the subsequent week.

## What content do you cover and how is this delivered over time?

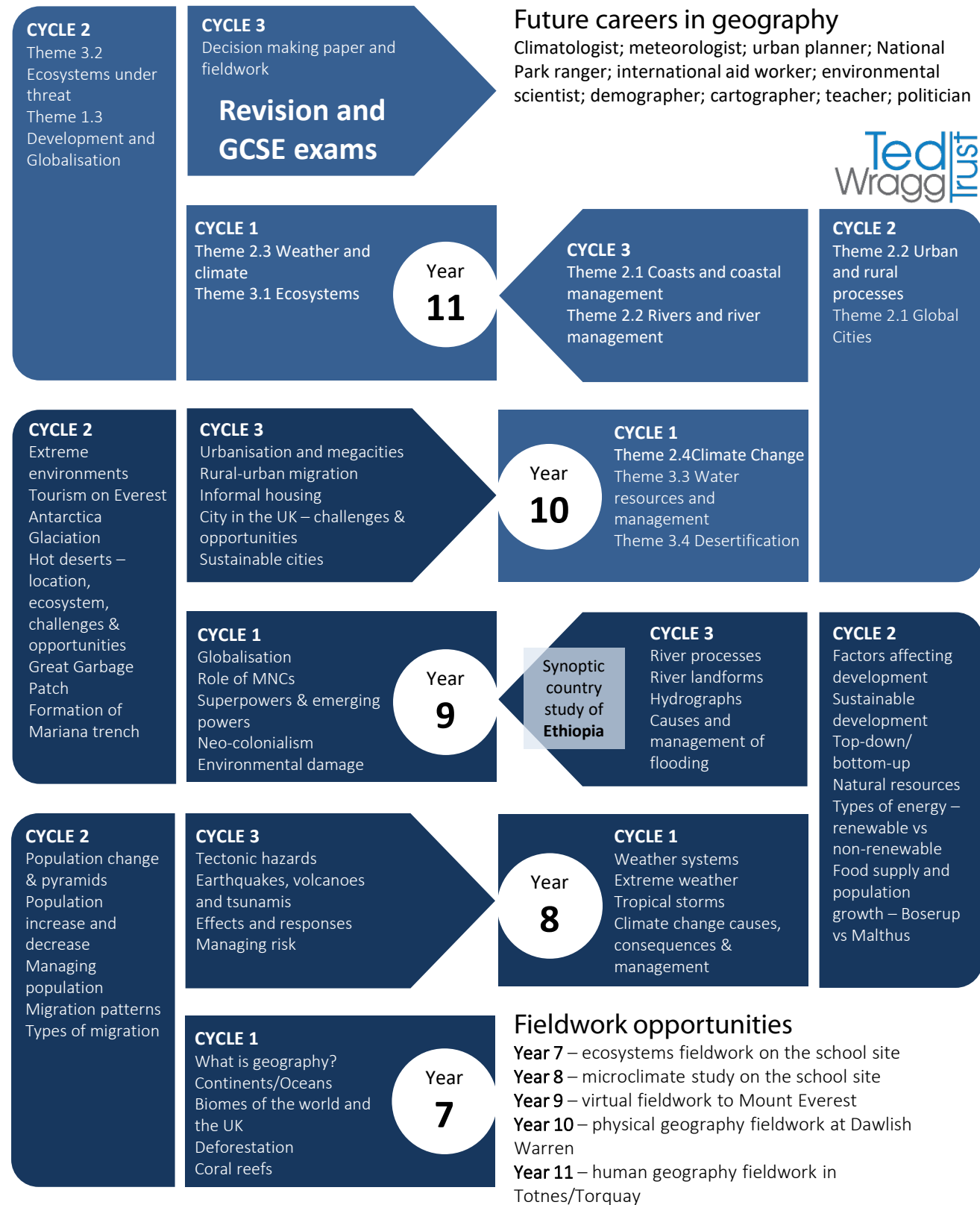
Topics are broadly either human or physical geography-related, with some interleaving of the two realms e.g. through the study of extreme environments. We have to make the assumption that all of our students should be able to continue their studies at A Level, hence the inclusion of a topic on global superpowers and geopolitics, which is a topic taught in greater depth at KS5. There is conscious spaced practice within the curriculum. An example would be coasts in Year 8 and 10.

## What content do you not cover (that others might) and why?

Our geography curriculum is largely compliant, and mapped against, with the national curriculum. We do not teach glaciation at either key stage as we did not have a glaciated landscape in the south west, yet our region is shaped by the river and coastal processes. Rather than a whole region of Africa in KS3, we generate greater depth through a study of one particular country (Ethiopia); drawing on concepts that have been taught before e.g. tectonics, population, migration, development thus supporting the development of student's schema. The KS2 curriculum has a significant local focus, so we tend to use our local area for fieldwork studies and focus classroom-based learning on our study of places elsewhere in the UK and the wider world.

## How do you sequence the curriculum so that new knowledge and skills builds on what has been taught before?

Using the Eduqas specification list of skills, we have ensured that each skill is taught and practised at least once across the KS3 curriculum. These are denoted in our lesson by orange slides with the skill named e.g. drawing climate graphs, calculating averages. Opportunities for students to develop their literacy fluency through extended writing are provided at both the mid-cycle and summative assessment points. This is modelled using the ‘I – We – You’ modelling structure.



## Key concepts

